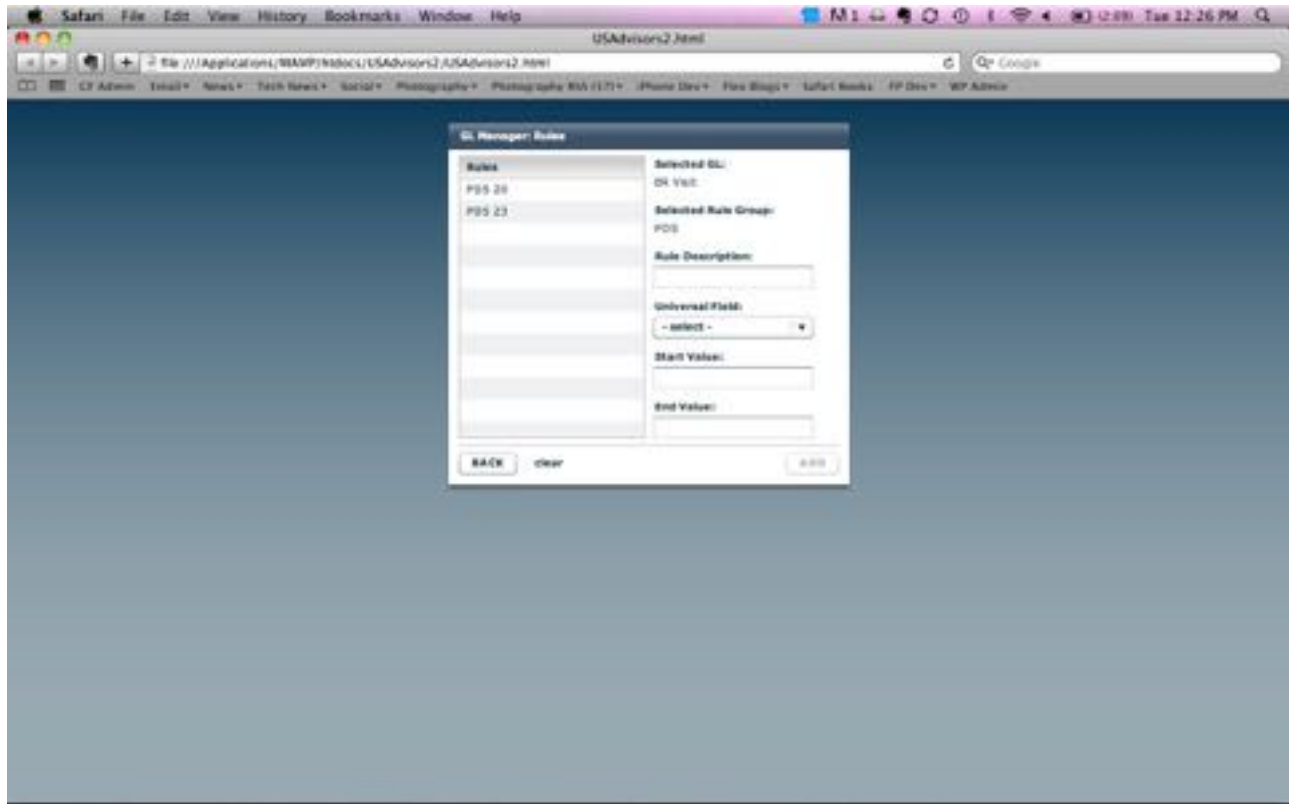


By clicking on a rule group on the left hand side, a new button will appear: CONFIGURE RULES. By selecting this button, you will be able to create or modify the rules for the selected rule group.



Rules are defined primarily by the start and end values and additionally by which field in the uploaded file the rules are being applied against. The system has a preconfigured set of required fields in the uploaded file, so the fields that rules can be processed against are populated in the UNIVERSAL FIELD box. The START VALUE and END VALUE are the range of values that are encompassed by the rule. For example, if only one CPT code defines a rule (ie 99211 as a PCP visit), the start and end value would both be the same. However, as in this example, if the rule encompasses all PCP E&M codes, the start value would be 99211 and the end value would be 99215.